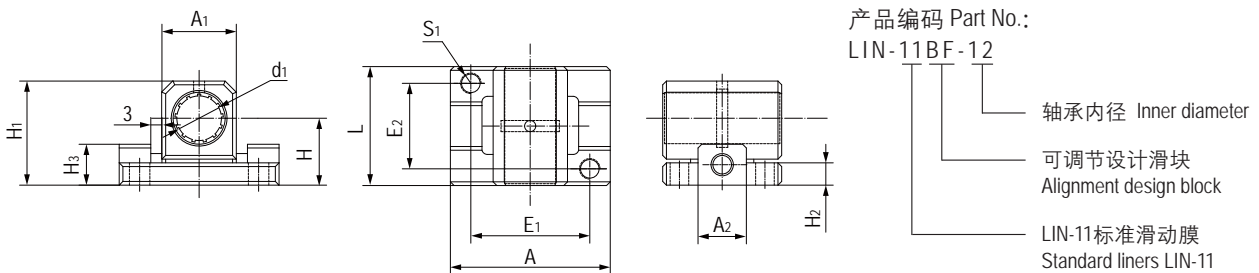


LIN-11BF 封闭式浮动直线滑块轴承 Closed and floating pillow blocks



- 封闭式浮动设计
 - 装配标准LIN-11滑动膜
 - 补偿平行度误差 $\pm 3.0\text{mm}$
 - 补偿对中误差 $\pm 3.5^\circ$
 - 阳极氧化铝合金适配器
 - 免维护、低噪音
 - 适用于污垢或灰尘环境
 - 使用温度 $-50^\circ\text{C}/+90^\circ\text{C}$
- Closed and floating design
 - Assembled standard liner LIN-11
 - Compensation of parallelism errors $\pm 3.0\text{mm}$
 - Compensation of misalignment errors $\pm 3.5^\circ$
 - Anodized aluminum adapter
 - Maintenance-free and low noise
 - Resistance to dirt and dust
 - Operation temperature $-50^\circ\text{C}/+90^\circ\text{C}$

标准规格 Standard specifications



轴 Shaft: h6-h9

| 产品编码 Part No. | d_1 [mm] | 公差 Tolerance [mm] | $H \pm 0.01$ [mm] | H_1 [mm] | A [mm] | $E_1 \pm 0.15$ [mm] | $E_2 \pm 0.15$ [mm] | S_1 [mm] | A_1 [mm] | A_2 [mm] | H_2 [mm] | H_3 [mm] | L [mm] |
|------------------|---------------|----------------------|----------------------|---------------|-------------|------------------------|------------------------|---------------|---------------|---------------|---------------|---------------|-------------|
| LIN-11BF-12 | 12 | +0.030/+0.088 | 18 | 28 | 43 | 32 | 23 | M5 | 20 | 13 | 6 | 11 | 32 |
| LIN-11BF-16 | 16 | +0.030/+0.088 | 22 | 35 | 53 | 40 | 26 | M6 | 26 | 15 | 7 | 11 | 36 |
| LIN-11BF-20 | 20 | +0.030/+0.091 | 25 | 41 | 60 | 45 | 32 | M8 | 32 | 19 | 7 | 12.5 | 45 |
| LIN-11BF-25 | 25 | +0.030/+0.091 | 30 | 50 | 78 | 60 | 40 | M10 | 40 | 23 | 9 | 15 | 58 |
| LIN-11BF-30 | 30 | +0.040/+0.110 | 35 | 59 | 87 | 68 | 45 | M10 | 48 | 28 | 10 | 58 | 68 |
| LIN-11BF-40 | 40 | +0.040/+0.115 | 45 | 76 | 108 | 86 | 58 | M12 | 62 | 80 | 20 | 20 | 80 |
| LIN-11BF-50 | 50 | +0.050/+0.130 | 50 | 89 | 132 | 108 | 50 | M16 | 78 | 100 | 24 | 24 | 100 |

| 产品编码 Part No. | 轴径 Shaft [mm] | F max. [N] 最大动载荷 Dynamic Load | F max. [N] 最大静载荷 Static Load | 重量 Weight [g] |
|------------------|------------------|----------------------------------|---------------------------------|------------------|
| LIN-11BF-12 | 12 | 960 | 6000 | 50 |
| LIN-11BF-16 | 16 | 1440 | 7500 | 80 |
| LIN-11BF-20 | 20 | 2250 | 10800 | 130 |
| LIN-11BF-25 | 25 | 3625 | 18000 | 280 |
| LIN-11BF-30 | 30 | 5100 | 24000 | 430 |
| LIN-11BF-40 | 40 | 8000 | 37500 | 850 |
| LIN-11BF-50 | 50 | 12500 | 45000 | 1550 |